

The BG-Counter App

What's new?

The new improved BG-Counter App is now available! You can profit from many new features and analysis possibilities – get more out of your monthly fee!

Your data will still be visible in the former app for a transition period.

Register now and check out all the new features:

» <https://bg-counter.biogents.com/registration>

• Easier trap management • Improved analysis

▷ Better control ▷ Save time & money

Easier trap management

- Sorting and search functions
- Location summary page
- Multiple traps can be edited at the same time
- Mosquito catch threshold
- Dashboard alerts

Automatic location recognition

- Location-based data storage
- Geofencing and assignment of geo-tags for grouping
- Reduced logistical effort
- Easier analysis

More comprehensive data analysis

- Different temporal resolutions (15 min, daily, weekly, or monthly aggregated data)
- Compare multiple traps with each other
- Compare mosquito activity during day and night
- Group analyses by geo-tags
- Mosquito maps for identification of mosquito hotspots

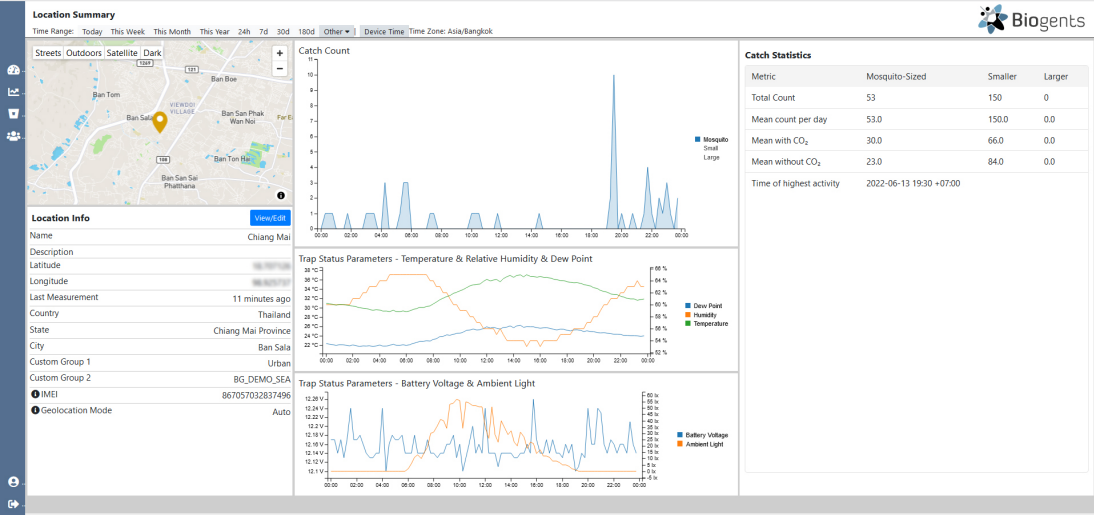
New user role: Observer

- The observer is like a guest but can see traps from different accounts

In Detail

Efficient trap management

Trap management is easier in the new web app: The dashboard gives an instant overview of locations and helps you to plan your operations, as it includes relevant information such as the catch count since last noon, warning icons, signal strength, and similar. Click on a location name to access a location summary page. Besides location-specific information, a catch statistics table, and a graph of catch counts, it also includes graphs of temperature, relative humidity, dew point, battery voltage, and ambient light.



All table columns now include sorting and search functions. For example, you can easily identify locations with an unusually high catch rate in the previous night.

Settings can be changed for multiple locations at the same time. For example: If you want to assign 20 of your locations to the same custom group (geo-tag), and another 30 to another group, you can accomplish the assignment of 50 locations in only 2 steps.

On the settings page you can now define a mosquito catch threshold (per 24 h) for each trap.

Automatic location recognition

Geofencing makes it possible for locations to be automatically recognized when you install a BG-Counter in the field.

As data are now stored based on location (instead of IMEI) you will save a lot of time, especially when you have many BG-Counter units, for example when you put your counters back into the field after a winter break. The new data storage concept makes it now much easier to analyze your data, especially when you use the same BG-Counter unit on multiple locations. These and other examples of what data storage based on location means to you are explained in a video, see "More information" at the end of the flyer.

When you place a trap on a new location, the geo-tags “Country”, “State”, and “City” are automatically assigned. There are two additional user-defined geo-tags. You could, for example, use one geo-tag to specify the neighborhood or city area, and the other to characterize the trap environment, for example: suburban, urban, forest, lake, swamp, park, or similar. These geo-tags allow you to make group-based analyses.

New user role: Observer

The observer is a new user role. It is like what used to be the “Guest” in a way, that an observer can't change settings, invite users, or add traps.

New is, that an observer can be invited by several Administrators of different accounts. The observer has then access to the traps of different accounts with one login.

Analyzer

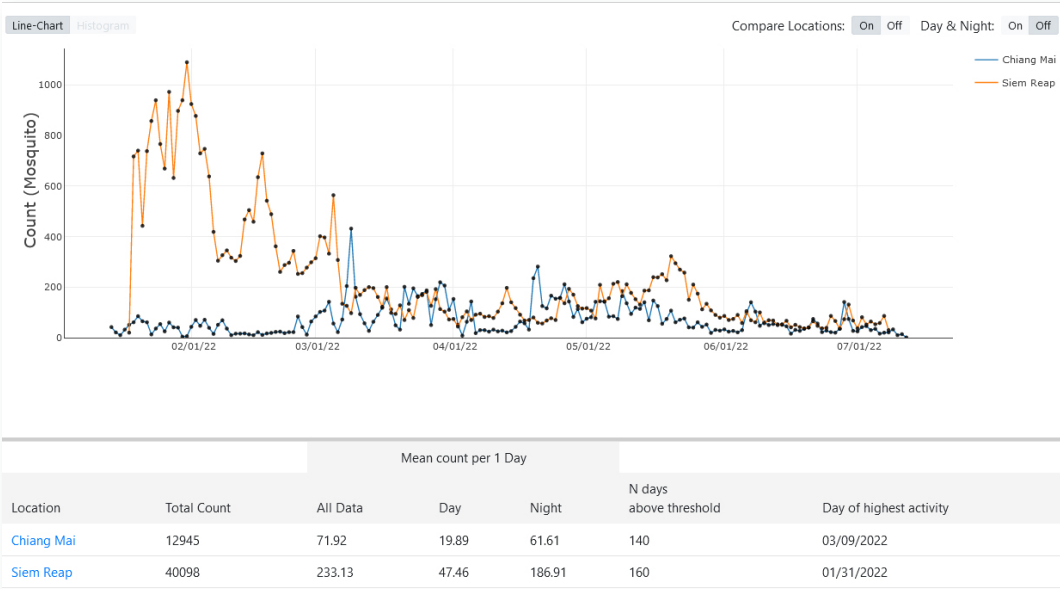
The Analyzer is a new tool that allows you to analyze your mosquito catch data in a more comprehensive way than before.

In the Analyzer settings, you can choose different time ranges (the time window that you want to analyze) and data frequencies (data can be aggregated on a daily, weekly, or monthly basis, instead of offering only a data point every 15 min). You can also choose, to only take data points at which CO₂ was added into consideration for your analyses.

Graphs of aggregated catch data can be displayed for daytime and nighttime separately.

Each graph is complemented by a catch statistics table.

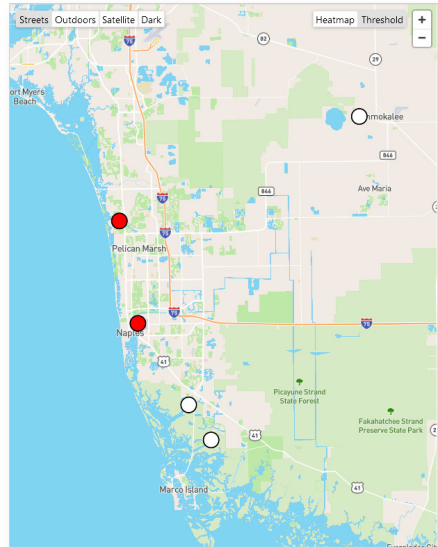
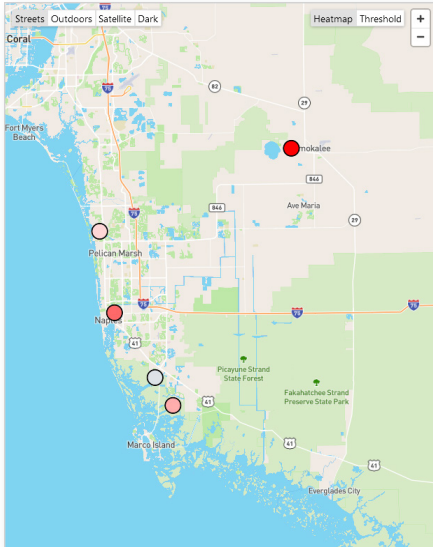
You can analyze a single location or compare several locations in one graph. If you have many traps so that you have different geotags (“State”, “City”, “Custom Group 1”, “Custom Group 2”), you can either select one group or compare multiple groups with each other.



You can choose between two types of mosquito abundance maps that will help you to identify mosquito hotspots:

Density map: Shows the mean number of mosquitoes per day in a selected time range. The darker the red circle, the more mosquitoes were collected.

Threshold map: A red circle indicates that the mean count of mosquitoes per day in the selected time range is above threshold. You can define a daily threshold mosquito count for each of your locations.



More information

For a detailed description of the new features of the new BG-Counter App, please see

- our video on youtube: » www.youtube.com/watch?v=BVgKV_2PXD0
- the manual: » <https://eu.biogents.com/manual-bg-counter2-en-web/>
- or contact our sales team: sales@biogents.com

ENGINEERED IN
GERMANY 



Biogents

Contact: E-Mail: sales@biogents.com | Webpage: www.biogents.com
Biogents AG | Weissenburgstr. 22 | 93055 | Regensburg | Germany